

Head Office:
Dixon Kelley Estate Agents
1 Penn Court
Station Road, West Moors
Dorset. BH22 0JJ

DORSET PARK HOMES

DRAFT

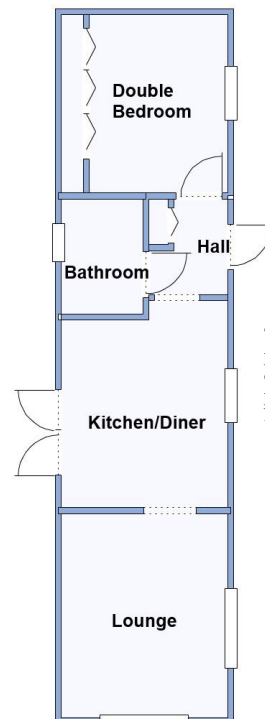
www.dorsetparkhomes.com

Telephone: 01202 877511

29 Gracelands Park, Lyndhurst Road, Christchurch. BH23 4SE



Quality New Home in Convenient Position

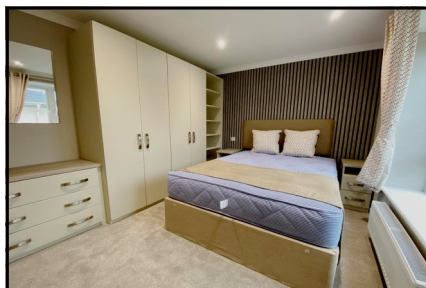
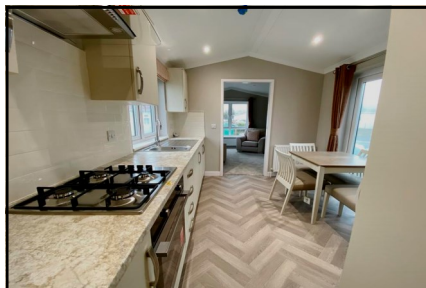


1-Bedroom Park Home - approx 40' x 10'

Accommodation & approximate room dimensions:

- Omar 'Image' Park Home
- Entrance Hall: Linen cupboard.
- Kitchen/Diner: approx 11'1" x 9'1" max. Range of modern floor and wall cupboards. Built-in oven & hob with cooker hood over. Integrated fridge/freezer & washer/dryer. LED Spot lights. Ample space for dining suite. Double doors to garden.
- Lounge: approx 11'3" x 9'1". Feature fireplace. Vaulted ceiling with LED spot lights.
- Double Bedroom: approx 9'9" x 9'1" Built-in wardrobes, dresser unit & display shelving..
- Bathroom: Panelled bath with mixer tap. Pedestal wash basin & WC. Chrome heated towel rail.
- Gas Central Heating (system untested)
- PVCu Double-Glazing
- Stylish Interior & Fully Furnished
- Garden laid to lawn.
- Parking on Plot
- Age Restriction 50+
- 1 Dog or Cat, but not to be replaced
- Small residential Park near to amenities, regular bus services & outstanding coastal walks & the New Forest.

Fully Furnished



Pitch Fee: approx £250 per month
Subject to Annual Review
Council Tax Band: 'A' Tenure: 1983 Mobile Homes Act Agreement

Price: £150,000 offers over

VIEWING STRICTLY BY APPOINTMENT WITH THE VENDOR'S AGENT Dorset Park Homes 01202 877511

IMPORTANT NOTE: These particulars are believed to be correct but their accuracy is not guaranteed. They do not form part of any contract. Nothing in these particulars shall be deemed to be a statement that the property is in good structural condition or otherwise, nor that any of the services, appliances, equipment or facilities are in good working order or have been tested. Purchasers should satisfy themselves on such matters prior to purchase Ref.W05136

The recommended specialist in Park Home sales
Partner: Simon Dixon

