

**Head Office:**  
Dixon Kelley Estate Agents  
1 Penn Court  
Station Road, West Moors  
Dorset. BH22 0JJ

# DORSET PARK HOMES

**DRAFT**

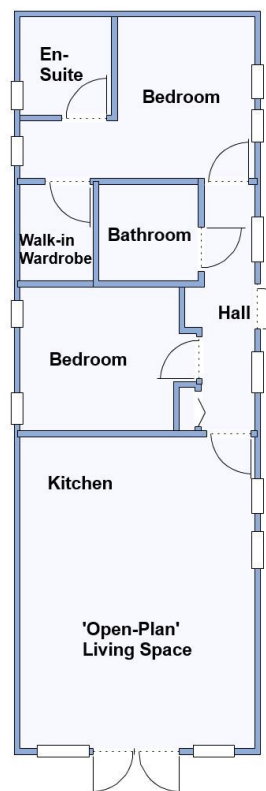
[www.dorsetparkhomes.com](http://www.dorsetparkhomes.com)

**Telephone: 01202 877511**

**44a Hillbury Park, Alderholt, Fordingbridge. SP6 3BW**



**Modern Park Home with Raised Deck**



This drawing has been prepared for diagrammatic purpose only. Not to scale

## 2 Bedroom Park Home approx 44' x 14'

Accommodation & approximate room dimensions:

- PrestigeHomeseeker 'Quindi' Park Home circa 2017
- Entrance Hall: Cupboard house gas combination boiler.
- 'Open-Plan' Living Space: approx 19'6" x 13'1". Feature fireplace. Double doors to RAISED DECK. Vaulted ceiling with Sky Light window & LED lighting. Ample space for lounge & dining suite.
- Kitchen: Range of floor and wall cupboards. Built-in oven, microwave, hob & extractor hood. Integrated fridge/freezer, washing machine & dishwasher.
- Bedroom 1: approx 13'1" x 9'1" max PLUS Walk-in wardrobe. Dresser unit.
- En-Suite Shower Room
- Bedroom 2: approx 10' x 8'1". Built-in wardrobe.
- Bathroom: Panelled bath. Pedestal wash basin & WC. Sky light window & chrome heated towel rail.
- Gas Central Heating (system untested)
- PVCu Double-Glazing
- Parking on Plot.
- Small Garden laid to lawn & shingle.
- Age Restriction 45+ Pets Considered
- Popular Residential Park near to local amenities & close to protected forestry walks.

## Popular 'Pet Friendly' Park



**Price £140,000**

**VIEWING STRICTLY BY APPOINTMENT WITH THE VENDOR'S AGENT Dorset Park Homes 01202 877511**

**IMPORTANT NOTE:** These particulars are believed to be correct but their accuracy is not guaranteed. They do not form part of any contract. Nothing in these particulars shall be deemed to be a statement that the property is in good structural condition or otherwise, nor that any of the services, appliances, equipment or facilities are in good working order or have been tested. Purchasers should satisfy themselves on such matters prior to purchase Ref.W04905

**Pitch Fee: approx £276 per month**

**Subject to Annual Review**

**Council Tax Band: 'A'**

**Tenure: 1983 Mobile Homes Act Agreement**

*The recommended specialist in Park Home sales*  
Proprietor: Simon Dixon

