

**Head Office:**  
Dixon Kelley Estate Agents  
1 Penn Court  
Station Road, West Moors  
Dorset. BH22 0JJ

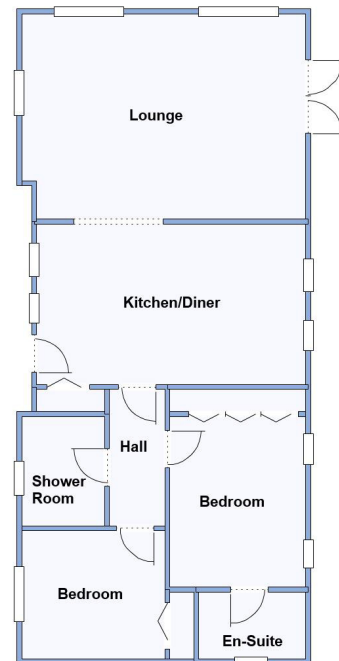
# DORSET PARK HOMES

**DRAFT**

[www.dorsetparkhomes.com](http://www.dorsetparkhomes.com)

**Telephone: 01202 877511**

**10 Rowan Drive, Regency Heights, Blandford Road North, Poole. BH16 6GN**

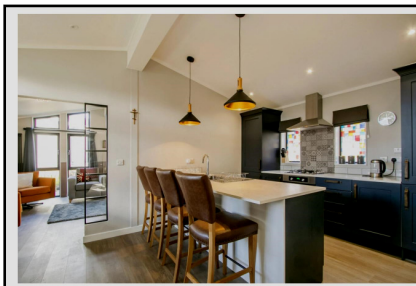


## 2-Bedroom Park Home - approx 45' x 20'

Accommodation & approximate room dimensions:

- **Lounge:** approx 19' x 13'9". Vaulted ceiling with LED spot lights. Double doors to Raised Terrace.
- **Kitchen/Diner:** approx 18' x 10'9". A superb fitted kitchen having a range of floor and wall cupboards. Built-in oven, hob & cooker hood. Integrated fridge/freezer & washing machine. Breakfast Bar. Vaulted ceiling. Ample space for dining suite. Cloaks cupboard.
- **Inner Hall**
- **Bedroom 1:** approx 13'3" x 9'2" including large fitted wardrobes. Air conditioning unit.
- **Luxury En-Suite Shower Room**
- **Bedroom 2:** approx 9'2" x 8'7". Recessed wardrobe.
- **Luxury Shower Room**
- **Gas Central Heating & PVCu Double-Glazing**
- **Large Raised Terrace** with wrought iron balustrade. Quality Metal Shed with electric.
- **Block driveway** providing 'on plot' Parking for 2 cars
- **Age Restriction 45+** Pets considered
- **Good Position** on Park close to wooded walks.
- **Newly developed Residential Park** with Gated Entrance for added security. Fishing lake and rural setting surrounded by wooded walks & protected heathland.

## Newly Developed 'Gated' Park



**Price: £230,000**

**Pitch Fee: approx £322 per month including sewerage**

**Subject to Annual Review**

**Council Tax Band: 'B'**

**Tenure: 1983 Mobile Homes Act Agreement**

**VIEWING STRICTLY BY APPOINTMENT WITH THE VENDOR'S AGENT Dorset Park Homes 01202 877511**

**IMPORTANT NOTE:** These particulars are believed to be correct but their accuracy is not guaranteed. They do not form part of any contract. Nothing in these particulars shall be deemed to be a statement that the property is in good structural condition or otherwise, nor that any of the services, appliances, equipment or facilities are in good working order or have been tested. Purchasers should satisfy themselves on such matters prior to purchase Ref.W05098

*The recommended specialist in Park Home sales*  
Partner: Simon Dixon

