



14 Middleway Taunton TA1 3QH



An immaculately presented and refurbished 5 bedroomed Victorian townhouse arranged over 3 floors with 2 reception rooms situated in this popular location within walking distance of Vivary Park and the town centre and within Castle School catchment with enclosed tiered garden to rear.





Features

- Entrance Hall
- Living Room with woodburner
- Family Room with French doors to garden
- Fitted Kitchen with integrated appliances and door to garden
- Dining Room with woodburner
- Master Bedroom with fitted wardrobe and Ensuite Shower Room
- Bedroom 2
- Jack and Jill Shower Room
- Further Bedroom
- 2 further double bedrooms on 2nd floor
- Family Bathroom
- Enclosed tiered courtyard garden to rear with useful storage shed and rear access
- Gas central heating
- Double glazing
- Castle School catchment
- Council tax band D
- What3words:
[///skirt.chimp.chats](https://www.what3words.com/skirt.chimp.chats)







14 Middleway is situated within easy reach of the centre of Taunton, the County Town of Somerset and within walking distance of Vivary Park.

The town is a bustling, forward-looking town with excellent amenities, a good selection of independent and high street shops, distinctive restaurants, cafés, a wealth of history and sporting facilities including the County Cricket Ground.

Taunton benefits from a main line railway station linking to London Paddington in less than 2 hours and excellent communications for the M5 motorway at junction 25, situated on the eastern side of the town.

Taunton offers a good selection of schools including Bishop Henderson and Parkfield primaries, the Castle School, and Richard Huish Sixth Form College.





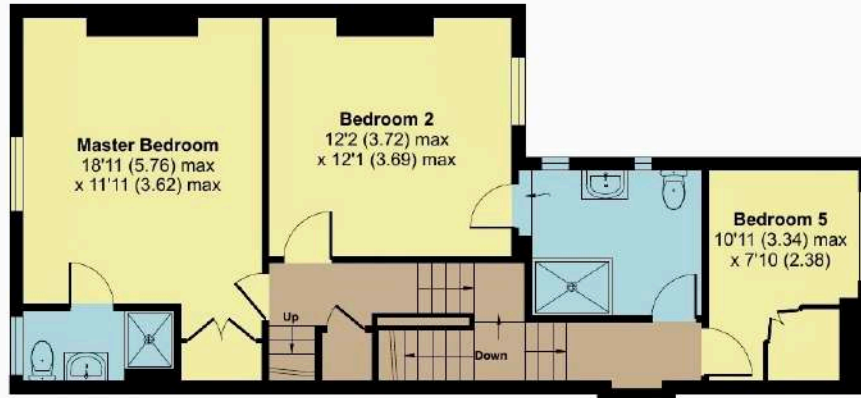
14 Middleway, Taunton, TA1 3QH

Approximate Area = 1965 sq ft / 182.5 sq m

Outbuilding = 70 sq ft / 6.5 sq m

Total = 2035 sq ft / 189 sq m

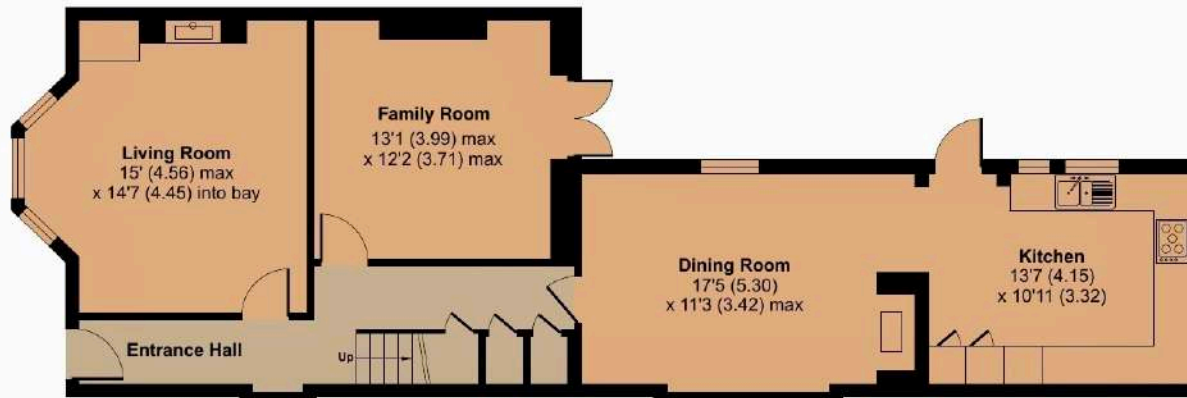
For identification only - Not to scale



FIRST FLOOR



SECOND FLOOR



GROUND FLOOR



OUTBUILDING



Floor plan produced in accordance with RICS Property Measurement 2nd Edition, Incorporating International Property Measurement Standards (IPMS2 Residential). © nichecom 2025. Produced for Robert Cooney. REF: 1279061



For clarification, we wish to inform prospective purchasers that: these particulars are set out as a general outline only for the guidance of intended purchasers, and do not constitute, nor constitute part of, an offer or contract; all descriptions, dimensions, references to condition and necessary permission for use and occupation, and other details, are given without responsibility and any intending purchasers should not rely on them as statements or representation of fact, but must satisfy themselves by inspection or otherwise as to the correctness of each of them; no person in the employment of Robert Cooney has any authority to make or give any representation or warranty whatever in relation to this property; we have not carried out a detailed survey nor tested the services, appliances and specific fittings.



Viewing strictly through the selling agents:

Robert Cooney

Corporation Street, Taunton,
Somerset TA1 4AW

Telephone 01823 230 230

E-mail taunton@robertcooney.co.uk

Website robertcooney.co.uk

**robert
cooney**

