

Head Office:
Dixon Kelley Estate Agents
1 Penn Court
Station Road, West Moors
Dorset. BH22 0JJ

Telephone: 01202 877511

DORSET PARK HOMES

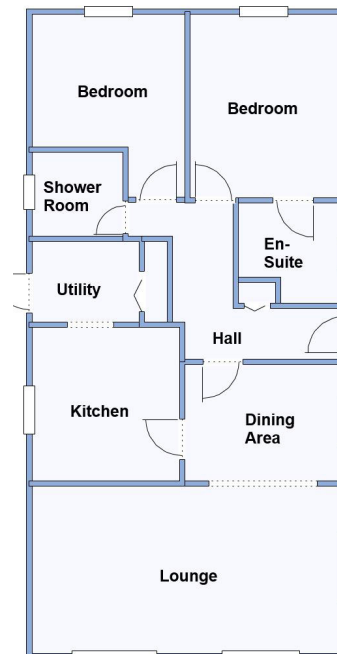
DRAFT

www.dorsetparkhomes.com

6 The Rise, Oaklands Park, Crossways, Nr Dorchester, Dorset. DT2 8JQ



Well Presented Park Home with Driveway & Garage



This drawing has been prepared for diagrammatic purpose only. Not to scale.

2-Bedroom Park Home - approx 40' x 20'

Accommodation & approximate room dimensions:

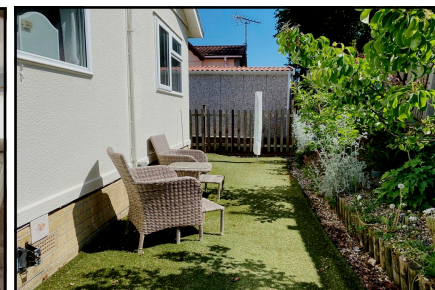
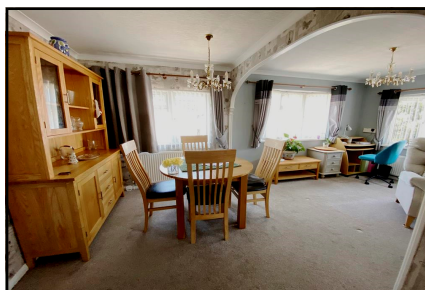
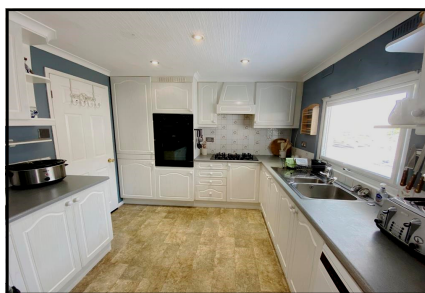
- 'Lissett' Park Home circa 1995
- Spacious Entrance Hall: Cloaks & Airing cupboard
- Lounge: approx 19'3" x 10'4". Feature fireplace.
- Dining Area: approx 9'9" x 7'3"
- Kitchen: approx 9'8" x 9'3". Range of modern floor & wall cupboards. Built-in high level double oven, hob & cooker hood. Space for dishwasher.
- Utility: approx 6'7" x 5'. Space for fridge/freezer & washing machine. Gas combination boiler.
- Bedroom 1: approx 11'6" x 7'9" Plus large fitted wardrobes.
- En-Suite Shower Room
- Bedroom 2: approx 9'5" x 8'3". Fitted wardrobes.
- Shower Room: Shower cubicle, wash basin & WC.
- Gas Central Heating System (untested)
- PVCu Double-Glazing
- Delightful Garden with artificial lawn & sunny aspect & useful shed.
- GARAGE: approx 17'10" x 8'6" Electric door.
- Age Restriction 50+ Pets considered.
- Popular, well maintained Residential Park near to local amenities.

Price: £165,000

VIEWING STRICTLY BY APPOINTMENT WITH THE VENDOR'S AGENT Dorset Park Homes 01202 877511

IMPORTANT NOTE: These particulars are believed to be correct but their accuracy is not guaranteed. They do not form part of any contract. Nothing in these particulars shall be deemed to be a statement that the property is in good structural condition or otherwise, nor that any of the services, appliances, equipment or facilities are in good working order or have been tested. Purchasers should satisfy themselves on such matters prior to purchase Ref.W05046

'Pet Friendly' Park



Pitch Fee: approx £174.99 per month
Subject to Annual Review
Council Tax Band: 'B'

Tenure: 1983 Mobile Homes Act Agreement

The recommended specialist in Park Home sales
Proprietor: Simon Dixon

